



Government of Pakistan
PAKISTAN ORDNANCE FACTORIES
TENDER ENQUIRY

To

Dear Sirs,

Reference : TENDER ENQUIRY NO 0002-HVN-FP-47-Capt. DATED. 31-01-2018.

Suppliers/Manufacturers/ OEMs are requested to submit quotations for the item noted in the schedule to the tender. Offers should be sent duly sealed in an envelope. Please note the following instructions for filling the tender:-

1. **SUBMISSION OF TENDER**

- 1.1 Tenders will be opened at 1230 hours on 12-03-2018 and must reach in this office at 1200 hours. The tender received late will not be entertained. You may witness the opening of the tender if you so desire. If a representative is deputed, he should bring a letter of authority from you.
- 1.2 Only one tender should be included in one envelope. The outside of the envelope should be inscribed with:-

Tender Enquiry No: 0002-HVN-FP-47-Capt dt. 31-01-2018

Tender to be opened on: 12-03-2018

Address as follows:-

MANAGING DIRECTOR
PAKISTAN ORDNANCE FACTORY
HAVELIAN CANTT DISTT. ABBOTTABAD. PAKISTAN.

- 1.3 If envelope do not indicate reference of TEs or received late the same will be returned unopened.

2. **GENERAL INSTRUCTIONS REGARDING OF QUOTATIONS**

- 2.1 For materials, the prices should be filled in column 5 and delivery date in column 6 of the schedule to this Tender Enquiry. The undertaking should be signed at the bottom of the schedule which shall form the Quotation. You may use a separate sheet if necessary.
- 2.2 For Plant and Machinery, you are required to quote in two parts (As per PPRA Rule 36-d):-

Part I "Technical Offer": It should exclusively give technical details and literatures/brochures of the offered plant, machinery and equipment; validity date; delivery schedule; and signed undertaking given on the schedule to this Tender Enquiry. It must not indicate price, costs etc.

Part II "Commercial Offer": It should indicate the commercial terms e.g. price, terms of payment, mode of payment, mode of supply.

Each part should be placed in a separate sealed cover. The envelopes should be inscribed with Part I "Technical Quotation without Price" and Part II "Commercial Quotation with Price".

- 2.3 The quotation must remain valid for, at least 90 days from the date of opening of tenders.
- 2.4 In the event of non-acceptance of offer, no intimation will be given to the Tenderers.
- 2.5 Conditional Offers or alternative offers are likely to be ignored.
- 2.6 Quotations should be based on FOB. The consignment will be shipped through Pakistan National Shipping Corporation (PNSC). In case there is no PNSC service in the country of shipping, please quote on C & F basis. The freight should be indicated separately. Insurance premium should not be included in the quoted price. However, where insurance is considered necessary, advice to that effect should be given in the quotation.
- 2.7 Submission of the offer through an agent in Pakistan should be avoided. In case it is considered inevitable, the agent's quotation must invariably be accompanied by the original proforma invoice from the principals/manufacturers.
- 2.8 Country of origin and port of shipment to be stated.
- 2.9 The offer of principal must clearly indicate whether the rate quoted is inclusive of agent's commission, and if inclusive rate of commission included be specified.
- 2.10 Supplier will render necessary information regarding hazardous effect on environment, of the materials/products supplied by them, in their quotation and shipping/dispatch documents.
- 2.11 If the requisite information is not furnished on the T.E. form or offer received is not in conformity with the requirement of the T.E such offer shall be ignored.

3. INSPECTION

- 3.1 Pre-shipment inspection team comprising of two member of purchaser will be arranged by the manufacture, all the expenses including traveling, boarding/lodging, and transportation will be borne by the supplier. The manufacture will properly address any discrepancy pointed out by the pre-shipment inspection team before shipment and the machine will be dispatched after acceptance of PSI.

4. ACCEPTANCE OF OFFERS

- 4.1 POF Havelian reserve the right to reject all bids or proposals at any time prior to their acceptance and upon request communicate concerned suppliers or contractors the grounds for its rejection of all bids, proposals without any justification.

4.2 PERFORMANCE BOND

- (a) The supplier will provide a Bank Guarantee to the tune of 10% of C&F value of the contract for satisfactory execution of the order. It shall be covered by any Scheduled Bank in Pakistan. The Bank Guarantee shall be endorsed in favour of CMA, Wah Cantt, who is Accounts Officer specified in the contract. The CMA Wah Cantt shall have the like power of seeking encashment of the Bank Guarantee as if the same has been demanded by the purchaser himself. The Bank Guarantee shall be furnished by the Supplier within 45 days from the date of opening of letter of credit. The Bank Guarantee will be valid for a period of 24 months after the date of FAT (Final Acceptance Test) Certificate. If delivery period is extended the Supplier shall arrange the extension of Bank Guarantee within 30 days from the date of amendment of L.C. If the Guarantee is not revalidated the same is liable to be encashed by the CMA, Wah Cantt.

- (b) In the event of unsatisfactory performance or any breach of the Contract, Bank Guarantee shall be forfeited by the Purchaser. The Bank Guarantee be returned to the Supplier by CMA, Wah Cantt on request after its expiry or 24 months after satisfactory Final Acceptance Test (FAT) whichever is earlier.

4.3 **FAILURE TO SUPPLY THE STORES**

All deliveries must be completed by the specified dates. If the failure to deliver the stores within the scheduled time should have arisen from "Force Majeure", which the purchaser may admit as reasonable ground for further time, he will allow such additional time as he may consider to have been required by the circumstances of the case. Otherwise, he will be entitled, at his discretion, to cancel the contract; and/or claim liquidated damages upto 2% but not less than 1% of the contract price of the items and their quantities for each and every month or part of a month, beyond the specified delivery date, during which these may not be delivered, subject to a maximum of 10% of the total contract value; or, to purchase from elsewhere, the unsupplied stores at the risk and cost of the supplier.

4.4 **PAYMENT**

Payment will normally be made by means of irrevocable letter of credit. Schedule of payment is as under:

Sr. No.	
01	80% payment will be released after the acceptance of PSI Team on submission of dispatch documents to Bank.
02	20% payment will be released on receipt and acceptance of store by the consignee.

All Bank charges incurred in Pakistan in connection with the establishment of L.C will be borne by the purchaser, whereas all Bank charges incurred in connection with drawing of payment including charges for confirmation of L.C. by the advising Bank / Foreign Bank will be borne by the Supplier.

5. **SECRECY OF INFORMATION.**

The tenderer and his employees must not communicate any information relating to the sale / purchase of stores under this enquiry to any person other than the manufacturer or to any press or agent not authorized in writing by POFs to receive it.

Please return the schedule to the tenderer duly signed by the specified date, along with the specifications, drawings etc., if any, enclosed herewith – even if you are unable to quote.

WARNING In case the firm abstain from making offers or fail to return/acknowledge the tender form by the specified date on three consecutive occasions, no further Tender Enquiry may be issued to them and their names would liable to be removed from the approved list.

Yours Faithfully

GM - ENGINEERING
For PAKISTAN ORDNANCE FACTORIES
Tele: +92-992-810001 & 3 Ext.28359
Fax: +92-992-810318
E.mail: mdhvn@pof.gov.pk

PAKISTAN ORDNANCE FACTORIESSCHEDULE TO TENDER NO. **0002-HVN-FP-47-Capt** DATED **31-01-2018****FOR MACHINERY.****TE WILL BE OPENED ON: 12-03-2018**

(1)	(2)	(3)	(4)	(5)		(6)
Item NO	Description with Specs. Etc.	Unit	Qty	Price Per Unit FOB or C&F Basis		Delivery Date
				In Figures	In Words	
1.	<u>Rotary Type Propellant Cord Cutting Machine along-with Pre-Cutting, Sifting Unit & Knife/ blade sharpening Machine</u> Specifications & Other Conditions attached as per Annexure-"A"	No	01			

Note: (i) In case of local firms see Annex (B) at page # 10.(2) **For Plant & Machinery:****Specification: - Attached**(3) **Special Conditions**

1. Suppliers/Manufacturers/OEMs are eligible to offer.
2. Manufacturers/OEMs having their own designs are also eligible to offer.
3. Certificate regarding Manufacture/OEM for the quoted machines be provided with offer.
4. Company profile including store supplied in Pakistan and trading worldwide be provided.
5. Quotation submitted on Schedule to T.E must be signed / stamped.
6. Provide complete specification & technical literature/Brochures alongwith offer.
7. Offer should only be forwarded if the manufacturer/OEM has authorization/ Export Permit for export of store.
8. Pre-shipment inspection of the store will be carried out by PSI team comprising of POF Persons. In this regards all expenditure (Ticking, Boarding and Lodging etc.) for visit of POF Persons (PSI Team) will be borne by the manufacturer/OEM.
9. Offer should be on C & F Karachi basis showing Sea freight Charges separately.
10. The related documents mentioned in Clause No. 8 of attached specifications must be provided along with the quotation.

Note: - Quotations must be submitted separately for Technical & Commercial offer duly sealed as per clause 2.2 of the T.E.(4) **Undertaking**

Should our offer be accepted, we hereby undertake to supply the stores/render the services contracted on the basis of General conditions of contract embodied in Form POF 1282, and to deposit the performance bond within the prescribed time, failing which it will constitute a breach of contract, and POF will have the right to purchase the stores/services elsewhere at our risk and cost.

Place _____

Signature of Tenderer _____

Date _____

Name _____

Position _____

Address _____

SPECIFICATION

1. **NOMENCLATURE** : Rotary Type Propellant Cord Cutting Machine along-with Pre-Cutting, Sifting Unit & Knife/ blade sharpening Machine

Technical Parameters:i. **Capacity**

Rotary Cutting Machine
Sifting Machine

Product	Outer Dia (mm)	Length of Product(mm)	Capacity (kg/hr)
12 Bore	1.90 – 1.95	0.3 ±0.02	40 (minimum)
SP 105,122 & 155mm	1.7 – 1.8	6.0 – 7.00	200 (minimum)
12.7mm	3.5 – 3.6	2.9 – 3.2	

- ii. **Efficiency** : 80 to 90 %.

Note: Cutting should be straight not in slant.

2. **MAIN EQUIPMENT**A. **Pre-Cutting Machine**

- i. Machine is required to cut the cord ends before feeding to rotary cutting machine.
- ii. Machinery consisting of stainless steel table and cutting mechanism containing safety devices to ensure operators safety.
- iii. Compressed air be used to drive and control the machine.
- iv. Input material specification is as under:-
 - Length of Single Bunch : 2000mm
 - Height of Single Bunch : 100mm
 - Width of Single Bunch : 150mm

B. **Rotary Cord Cutting Machine**

- i. Machine is required to cut cylindrical propellant cords as per detail given below:

Parameters	Minimum (mm)	Maximum (mm)
Dia Meter	1.7	3.6
Cutting Length	0.3	7.00

- ii. Easy and accessible controls for cut length range 0.3mm to 7.0mm having incremental value ≤ 0.05mm.
- iii. Equipment should be provided appropriate ventilation system for exhaust ethanol / ether vapor.
- iv. Manual feeding is desired allowing maximum and easy placement of cords in feeding channel.
- v. Feeding rollers in contact with propellant cords shall be adjusted according to required dimensions from control panel along-with provision of safety clutch in case of emergency stoppage.
- vi. Speed of rotary cutter shall be adjustable and control from control panel for the production of desired quantity and quality of propellant size.
- vii. The cutter should offer maximum safety features that should be equipped with flame detector and deluge system along with safety switches and sensor.
- viii. The knives of rotary cutter should be made up of high quality explosive hazards compatible material and shall serve maximum operating life.
- ix. The arrangement of knives on rotary cutter should be so made that easy replacement and repair/service would be possible.
- x. The rotary system shall induce natural air cooling system inside the cutting area , if required.

C. **Sifting Machine**

- i. Evenly cut propellant grain shall travel from the outlet of rotary cutter to intermediate storage via transportation conveyor.

- ii. Equipments placed in screening area should be equipped with propellant dust collection and suction system. So that it offer meticulous clean working environment.
- iii. Propellant classifying and screening system should be so designed that it reduces man power involvement.
- iv. Weighing balance with necessary safety protection should be provided at the delivery end of unit.
- v. Controls for setting particular sifting size should be available on Machine.
- vi. Materials used for the construction of vessels and auxiliary items should be durable and strictly comply explosive hazards environment rules.
- vii. The sifting machine should capable to sift following propellant.

Product	Outer Dia (mm)	Length of Product(mm)	Capacity(kg/hr)
12 Bore	1.90 – 1.95	0.3±0.02	40 min
SP 105,122,130 & 155mm	1.7 – 1.8	6.0 – 7.00	200 min
12.7mm	3.5 – 3.6	2.9 – 3.2	

D. knife /Blade Sharpening Machine

Technical Parameters

- i. Distance spinde-table 450 mm
- ii. Table 635 x 305mm
- iii. longitudinal travel 765 mm
- iv. magnetic clamping plate 600 x 300 mm
- v. Spindle speed 1450 rpm
- vi. grinding wheel dimensions 350 x 40 x 127 mm
- vii. max. work piece weight 270 kg

a) Including Following Equipments

- 2-axes digital read-out, Grinding wheel with flange, Wheel balance arbour,
- Electro-magnetic chuck, Hydraulic longitudinal feed, Automatic cross feed,
- Automatic vertical feed, Automatic demagnetizer, Man.parallel wheel dressing device,
- Coolant device, Separate hydraulic unit, Auto .central lubrication,
- Dressing diamond, Operator tools

3. GENERAL CONDITION

- 3.1 All the components/ parts of entire unit should confirm safe operation in explosives and flammable vapor hazardous working environment.
- 3.2. All portable/handling and transportation container made up of explosive compatible material should be included in the scope of supply.
- 3.3. The feeding of material from cord cutting to sifting shall be through conveyor belt.
- 3.4. Unit should be designed in such a manner that the man involvement should be minimum when the machine in operation.
- 3.5. For emergency shutdown of machine, a suitable emergency shutdown system should be provided to switch off the machine immediately.

4. SCOPE OF SUPPLY.

Hardware (Mechanical & Electrical)

The following hardware should be included in the supply.

- 4.1 Suitable sprinkler / flooding with deluge system capable of controlling any accidental ignition during process. This system should be operated by automatic mechanism in less than 30 mili sec. as well as manual
- 4.2 The fire protection system should have IR, UV & heat Sensors. Moreover fire control panel alarm, annunciation & trip logic for machine as per requirement should also be provided.
- 4.3 Complete cutting machine including in built safety equipment and essential accessories.
- 4.4 Erection material such as steel structure for supporting of machinery & piping etc.
- 4.5 Cables required for electrical installation.

- 4.6 Start / Stop control station for all motors (with ampere meters) and pumps etc along-with perforated cable trays for power & instrumentation and mounting accessories.
- 4.7 All valves, interconnecting piping, fitting, gaskets, couplings, bolts & nuts.
- 4.8 Consumable required during installation of machinery.
- 4.9 Machines along with accessories will be installed in the existing rooms. (Sketch is attached)
- 4.10 The supplier is required to supply soft copy and hard copy of software. Supplier shall also provide schematics of interface module. OEM literature regarding fire protection system may also be provided.
- 4.11 All the motors, gears and electrically driven accessories installed in the classified area should be intrinsically safe, explosion proof, flame proof & or with best IP rating (Minimum IP = 65, subject to installation in same machine room) as & where required.

5. **ERECTION INSTALLATION & TRIAL RUN OF MACHINERY.**

- 5.1 The purchaser personnel's under the working supervision of the supplier's engineer & technicians shall install the machinery.
- 5.2 The machinery will be commissioned and trial production will be carried out by seller's engineers. Purchaser shall provide the required number of operators & technicians for the installation, commissioning & trial run to cut 2000kgs at 40kg/h at a minimum cut length of 0.3±0.02 mm and minimum dia of 1.9 mm in 05 working days continuously. The efficiency of the machine will not be measured on the basis of cutting of bigger size of prop.
- 5.3 The supplier should indicate the total man-weeks of his engineers / technicians required for the installation, commissioning and trial run of the machinery. All expenses including boarding, lodging, traveling & daily allowances of the supplier's engineers / technicians are to be borne by the supplier. However local transport will be arranged by the purchaser.
- 5.4 The supplier shall provide the time schedule for completion of the installation, commissioning and trial run.
- 5.5 It shall be guaranteed that spares shall be available for at least 15 years after successful installation of the machine.
- 5.6 The PSI team comprising 02 officers/officials will perform pre shipment inspection of the store for a period of 01 weeks. Moreover supplier will also train 06 officers /officials of buyer on the plant for 02 weeks.

6. **DOCUMENTATION.**

- The supplier will provide relative technical data (4 copies each in English language) including the following:
- 6.1 Existing building will be utilized for the installation of the equipment. Complete layout / drawings are attached as Annex-1. All the design documents related to civil will be provided by the supplier in case of any modification is required in the existing building.
 - 6.2 Detailed drawings & specifications of the machinery.
 - 6.3 Detailed erection drawings.
 - 6.4 Specifications of materials not included in the supplies but necessary for integration of the offered machinery.
 - 6.5 Maintenance and services manuals of the machinery.
 - 6.6 Safety and labour protection instructions.
 - 6.7 Comprehensive operating manual of cutting machine & related equipment.
 - 6.8 P & I drawing.
 - 6.9 Detailed electrical & instruments connecting diagrams.

7. **CLIMATIC CONDITIONS.**

- Temperature range : -3 to 50⁰C
- Atmospheric Relative humidity : 25 – 90%

8. **AVAILABLE UTILITIES.**

Following utilities are available at site:-

- Electricity 380 - 400 volts, 50 Hz, three phase.
- Electricity 220 – 230 volts, 50 Hz, single phase.
- Raw Water
- Chilled Water
- Steam at 25 bar pressure.
- Compressed air at 4-5 bar at generation point.

9. **SPARES**

9.1 02 years necessary mechanical, electrical and instruments spares should be included with item wise price. The following items must be included in the scope of supply against spares:

i) 01 x Set of cutting blades for cutting machine.

ii) 04 x Sets of sifting sieves.

9.2 Supplier shall guarantee that all mechanical, electrical and instrument spares, would be available for a period of 15 years on payment after commissioning of the unit as and when required.

10. **PSI AND TRAINING AT FIRMS PREMISES.**

10.1 The PSI team comprising of 02 officers/officials will perform Pre Shipment Inspection of the store for a period of 01 week. Moreover, supplier will also train 06 officers/officials of buyer on the plant of similar production at the supplier's premises for the period of 02 weeks. Air Tickets, Boarding, Lodging, Daily allowance and Inland Travelling expenses will be borne by supplier.

10.2 Shipment of store shall be undertaken after acceptance / authorization by PSI team.

11. **COUNTRY OF ORIGIN**

European, UK & USA OEMs are eligible.

12. **PAYMENT TERMS**

Payment to the supplier will be made by means of an irrevocable letter of credit.

However the payment terms will be **80%** of FOB value against PSI Certificate & shipping documents and remaining

20% amount to be released after satisfactory commissioning and trial of the unit.

13. **TRAINING (ON SITE)**

During the stay of seller engineers at our works they will be required to train the concerned maintenance, instrument and production personnel of the purchaser. Air Tickets, Boarding, Lodging, Daily allowance and Inland Travelling expenses will be borne by supplier.

14. **TECHNICAL SUPPORT.**

The supplier shall confirm that after installation of the cutting machine, there should be continuing technical support as and when required by the purchaser. In addition, the purchaser shall be kept informed regarding latest advancement in the related technology for further improvement in the process for a period of 15 years, commencing from the date of installation of cutting machine.

15. **REFERENCE LIST**

The firm will provide the reference list of this equipment where these machines are already supplied in the world.

16. **PERFORMANCE BOND**

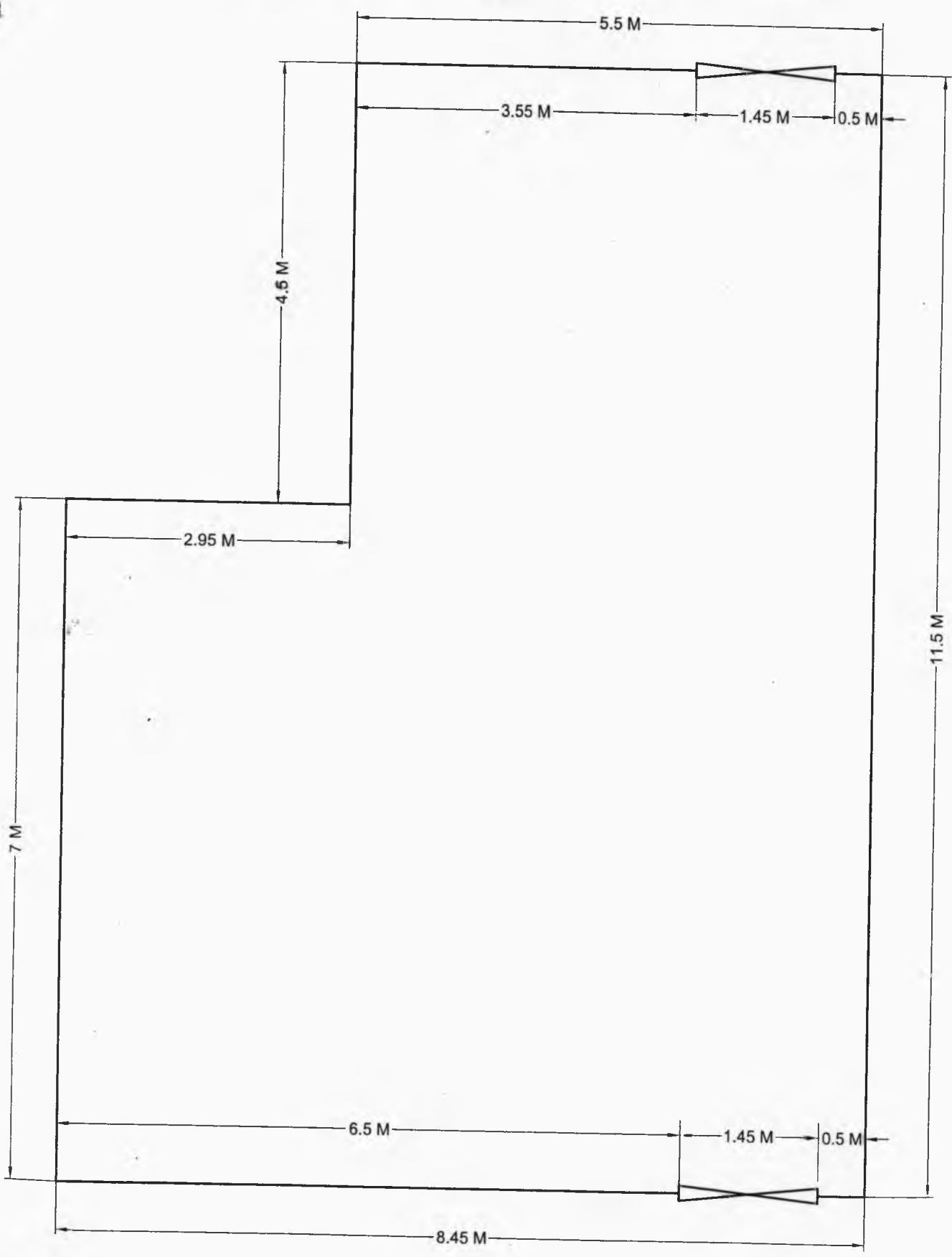
Performance bond to the extent of 10% of the value of the contract shall be provided by the supplier in the form of bank guarantee within 45 days of opening of letter of credit. Performa of the bank guarantee is enclosed as Annex-D. This shall remain valid for 02 year after successful commissioning.

17. **WARRANTY GUARANTEE.**

- 17.1 The machine and accessories shall be accepted on supplier's warranty / guarantee with regard to quality and quantity at sizes of prop (i.e. 0.3 mm, 6.0-7.00 & 2.9-3.2mm), on trial run at consignee's warehouse in presence of supplier's rep (if desired by supplier) at their cost. The supplier shall render warranty / guarantee certificate in duplicate to the purchaser on the enclosed proforma (Annex-C) as soon as stores have been dispatched / delivered. The warranty / guarantee shall be binding on the supplier for a period of 24 months reckoning from the date of commissioning of machine.
- 17.2 In case the stores on checking / test after receipt at consignee's warehouse are found not conforming strictly to the relevant specification and other particulars or found broken during transit, the supplier shall immediately replace the rejected / broken stores by acceptable store free of cost and without any obligation to the purchaser.
- 17.3 The supplier shall warrant the good quality of all equipments supplied free of defects or failures due to faulty design, material, or workmanship.
- 17.4 The supplier shall also provide guarantee for meeting the requisite quality and quantity of the products. Quantitative guarantee regarding plant capacities shall be based on 50 continuous working hours (02 ton at minimum cut length of 0.30mm and min dia meter of 1.9mm). In case of any deficiency in terms of quality and quantity of products, all related expenditures to fulfill commitment shall be borne by the supplier.
- 17.5 Pre-shipment inspection (team comprising of two members of purchaser) will be arranged by the supplier in which all the expenses including traveling, boarding / lodging, transportation, daily allowance will be borne by the supplier. The supplier will properly address any discrepancy pointed out by the pre-shipment inspection team before shipment and the machine will be dispatched after acceptance of PSI team.
18. **NOTE:**
POF shall deal with the supplier directly without involvement of any agents. The purchaser shall pay no agency commission.

SKETCH OF THE ROOM

Annex-1



Documents Required In Case Of Submission of Tender by local firms
OR
On Behalf of Foreign Principals

- i. *Proof of being OEM or his authorized dealer.*
- ii. *Company Profile*
- iii. *Financial status showing annual turnover.*
- iv. *Detail of contracts finalized with POFs & other Govt. depts.*
- v. *NTN/GST Certificates.*
- vi. *Proof of registration with any Government depts.*
- vii. *Bid Money @ 2% (for registered firms with POFs) and 5% (for un-registered firms) of the quoted value (upto max. ceiling of Rs 0.200 million) should accompany the tender in shape of Call at Deposit Receipt from any scheduled bank drawn in favour of MD-POF Hvn Cantt.*
- viii. *Offer in local currency without tender fee i.e., Rs. 500 (Postal Order) & bid money will not be considered.*
- ix. *Offer without complete Bid Money (CDR only) & Tender Fee (Postal Orders only) in accordance with clause No. 4 & 5 will not be entertained.*
- x. *Basic Price and Sales Tax should be quoted separately.*
- xi. *In case, the order is placed on your firm, Professional Tax Certificate issued by the Govt of KPK will have to be submitted along with the bill against supplies*

WARRANTY / GUARANTEE CERTIFICATE

Firm's Name _____

Contract No. _____ Date _____

We hereby guarantee that the goods supplied against the above contract are in all respect in accordance with the relevant specifications and terms of the contract and that the materials used, whether or not of our manufacture, are in accordance with the latest approved standard specifications complete, are of good workmanship / quality throughout, latest design, no case used / old or reconditioned and that we shall replace free of cost, every article or part thereof which before use or in use, shall be found defective, old reconditioned or not within the limits and tolerance of specification requirements, or in any way not in accordance with the terms of the contract.

2. In case of our failure to replace defective stores free of cost within the period specified by the Purchaser we would refund the relevant cost.

3. The Warranty / Guarantee will remain valid for 24 months counted from the date of Final Acceptance Test (FAT).

Signature _____

Name _____

Status in the Firm _____

Dated _____