



POF 1262  
(FOREIGN SUPPLIES)

GOVERNMENT OF PAKISTAN  
PAKISTAN ORDNANCE FACTORIES  
TENDER ENQUIRY

To

Dear Sirs,

Reference: Tender Enquiry NO. **POF-5226-GEN-FP-CAPT(10)-PUR-Gdl** Dated **26.04.2018** .Offers should be sent duly sealed in an envelope. Faxed offers received before pening of tender are acceptable. Please note the following instructions for filling the tender:-

1. **SUBMISSION OF TENDER**

- 1.1 Tenders will be opened at 1130 hours on **05.06.2018** and must reach this office on or before that time. The tender received late will not be entertained. You may witness the opening of the tender if you so desire. If a representative is deputed, he should bring a letter of authority from you.
- 1.2 Only one tender should be included in one envelope. The outside of the envelope should be inscribed with:-

Tender Enquiry No: **POF-5226-GEN-FP-CAPT(10)-PUR-Gdl**

Tender to be opened on: **05.06.2018**

Address as follows:-

**MANAGING DIRECTOR POF GADWAL**  
**SUB.P.O.26 AREA, WAH CANTT**  
**DISST. RAWALPINDI (PAKISTAN).**

- 1.3 If envelop do not indicate reference of TEs or received late, the same will be returned un opened.

2. **GENERAL INSTRUCTIONS REGARDING PREPARATION OF QUOTATIONS**

- 2.1 **For Plant and Machinery**, you are required to quote in two parts:-

**Part-I: "Technical Offer"** It should exclusively give technical details and literature / brochures of the offered plant, machinery & equipment, validity date, delivery schedule and signed undertaking given on the schedule to this tender enquiry. It must not indicate price, costs etc. Country of origin should be clearly mentioned.

**Part-II: "Commercial Offer"** It should indicate the commercial terms e.g. price, terms of payment, mode of payment, mode of supply.

**Each part should be placed in a separate sealed cover. The envelopes should be inscribed with Part-I "Technical Quotation without price" & Part-II "Commercial Quotation with price".**

- 2.2 The quotation must remain valid for, at least 90 days from the date of opening of tenders
- 2.3 The quotation should hold good for any reduced or enhanced quantities without notice.
- 2.4 In the event of non-acceptance of offer, no intimation will be given to the Tenders.
- 2.5 Conditional offers or alternative offers are likely to be ignored.
- 2.6 Quotations should be based on FOB. The consignment will be shipped through Pakistan National Shipping Corporation (PNSC). In case there is no PNSC service in the country of shipping, please quote on C & F basis. The freight should be indicated separately. Insurance premium should not be included in the quoted price. However, where insurance is considered necessary, advice to that effect should be given in the quotation.
- 2.7 Submission of the offer through an agent in Pakistan should be avoided. In case it is considered inevitable, the agent's quotation must invariably be accompanied by the original Proforma Invoice from the principals/ manufacturers.
- 2.8 Country of origin and port of shipment to be stated.
- 2.9 Supplier will render necessary information regarding hazardous effects on environment, of the materials/products supplied by them along with shipping/ dispatch documents.
- 2.10 The supplier will furnish a declaration regarding Fees, Commission & Brokerage etc payable by the firm along with shipping documents.
- 2.11 If the requisite information is not furnished on the TE form or offer received is not in conformity with the requirement of the TE each offer should be ignored.

### 3. **INSPECTION**

- 3.1 **Pre-Shipment Inspection (PSI).**  
Pre-Shipment Inspection of machine at firm's premises will be conducted by PSI Team comprising of 03 POF Engineer(s) for 04 x days (excluding journey period). Boarding and lodging, return Air Tickets, inland transportation & 30% daily allowance (DA) per person per day of training including food expenses will be borne by the supplier. The inspection team, besides others, will particularly carry out trial run of the machine and it will be considered satisfactory subject to production of 150 x components as per sketch No.SK/COM-1378 & conformity with geometrical accuracy standards, claimed in technical offer. Dispatch of components/ materials/ gauges to carry out trial run at firm's premises will be the sole responsibility of firm through local rep.
- 3.2 **Training**  
Free of cost training for 01 week (excluding journey period) for 05 x POF Engineers/Technicians on programming, operating and maintenance at manufacturer's premises on the machine for 300 x components as per Sketch No.SK/COM-1378. Boarding and lodging, return Air Tickets, inland transportation & 30% daily allowance (DA) per person per day of training including food expenses will be borne by the supplier.

4. **INSTALLATION & COMMISSIONING**

- 4.1 Installation and commissioning of the machine at POF Gadwal Wah Cantt shall be the responsibility of the machine supplier including boarding & lodging. At least 1000 components as per sketch No.SK/COM-1378 will be produce on continues run on the machine in purchaser premises.
- 4.2 The supplier will provide the warranty / guarantee certificate, which will be valid for a period of 12 months after successful installation and commissioning of the machine.
- 4.3 Final acceptance based on demonstration of all demanded functions/technical requirements & test run, proving of accuracy and cycle time.

5. **WARRANTY / GUARANTEE CERTIFICATE**

The supplier will provide the warrantee / guarantee certificate, which will be valid for a period of 12 months after successful installation and commissioning of the machine.

6. **COUNTRY OF ORIGIN**

Europe, UK & Japan

7. **ACCEPTANCE OF OFFERS**

- 7.1 The right to accept or reject any offer in full or in part is hereby reserved. However, rejection grounds shall be intimated to the bidder.

7.2 **PERFORMANCE BOND**

a) The successful bidder will provide Performance Bond at the rate of 10% FOB value of the contract in favour of CMA (POF), Wah Cantt. The Performance Bond will be furnished in the form of Deposit at Call Receipt from any scheduled bank in Pakistan or an unconditional bank guarantee on prescribed proforma covered by any scheduled bank in Pakistan. The Performance Bond shall be furnished within 45 days from the date of Opening of Letter of Credit. It shall be valid for a period of 12 months after the date of expiry of letter of credit. If the Performance Bond is not furnished within the prescribed time, the Purchaser reserves the right to:

- i. Impose penalty @ 1% per month of the value of CDR/BG.  
(Clause-4.2 (a-i) is not applicable in case of procurement of Plant / Equipment / Machinery items)
- OR
- ii. Cancel the contract and make other arrangements for purchase of the stores at the risk and expense of the supplier.

(b) No Performance Bond will be required if the total value of the contract is less than US\$ 50,000 and contract is placed directly on the foreign Supplier.

7.3 **FAILURE TO SUPPLY THE STORES**

All deliveries must be completed by the specified date. If the failure to deliver the stores within the scheduled time should have arisen from "Force Majeure", which the Purchaser may admit as reasonable ground for further time, he will allow such additional time as he may consider to have been required by the circumstances of the case. Otherwise, he will be entitled, at his discretion, to cancel the contract; and/or, claim liquidated damages upto 2% but not less than 1% of the contact price of the items and their quantities for each and every month, beyond the specified delivery date, during which these may not be delivered, subject to a maximum of 10% of the total contract value; or, to purchase from elsewhere, the unsupplied stores at the risk and cost of the Supplier.

7.4 **PAYMENT**

- (a) 80-20% payment will be made by means of irrevocable letter of credit. 80% payment will be made against shipping documents & acceptance report of PSI Team countersigned by the consignee. Balance 20% payment will be released on acceptance of store by the consignee after receipt, satisfactory performance and successful trial run of the machine and issuance of FAT (Final Acceptance Test) Certificate.
- (b) All Bank charges incurred in Pakistan in connection with the establishment of L.C. will be borne by the Purchaser, where as all Bank charges incurred in connection with drawing of payment including charges for confirmation of L.C. by the advising Bank/Foreign Bank will be borne by the Supplier.

8. **SECURITY OF INFORMATION**

The tenderer and his employees must not communicate any information relating to the sale/purchase of stores under this enquiry to any person other than the manufacturer or to any press or agent not authorized in writing by POFs to receive it.

Please return the Schedule to the tender duly signed by the specified date, alongwith the specifications, drawings etc, if any, enclosed herewith even if you are unable to quote.

**Warning:** In case the firm abstain from making offer or fail to return / acknowledge the tender form by the specified date on three occasions no further tender enquiry be issued to them and their name would be liable to be removed from the approved list

Yours faithfully,

**(MUHAMMAD MASOOD)**  
G.M-PP&C POF Gdl  
For Pakistan Ordnance Factories

---

**Anti-Tank Ammunition Factory Pakistan Ordnance Factories (POF)**

Post Office 26 Area Gadwal Wah Cantt

Tele: 09251905526 Ext-601 & 254 Fax: +92519271400 Email: [mdgdl@pof.gov.pk](mailto:mdgdl@pof.gov.pk)

Contd...P/5

PAKISTAN ORDNANCE FACTORIES  
SCHEDULE TO TENDER ENQUIRY NO.POF-5226-GEN-FP-CAPT(10)-PUR-Gdl DATED 26.04.2018

(1) FOR MATERIALS

(2) FOR PLANT & MACHINERY:

(1)	(2)	(3)	(4)	(5)		(6)
Item no.	Description with specs. etc.	Unit	Qty	Price per Unit FOB or Free delivery		Delivery Date
				In Figures	In Words	
1	CNC Bar Feed, Turning Lathe Capacity Dia 42mm As per Annexure "A"	No	01			

Specifications: - Enclosed as Annexure "A"

(3) Special Conditions. -

- i. Inspection of machines will be carried out by PSI, (Pre-shipment Inspection) Team of POF at the suppliers /manufacturer's premises. The supplier will ship the machines only after having satisfactory inspection report by the PSI team, counter signed by the consignee.
- ii. POF will hold no responsibility for any damage occurred during shipment of the machine.
- iii. Electrical & Mechanical Spare parts with itemized price list for 5000 operating hours are required. Availability of electronic spares for control for 10 years.
- iv. Reputable European / UK / Japanese OEMs can participate and are required to provide following information's:
  - i. Proof of being OEM with the profile / brochure.
  - ii. Financial status by showing the annual turnover.
  - iii. List of similar supplies in past, their financial values and references.
  - iv. Well established supplier can take part by indicating their OEMs.
- v. Foreign suppliers / Manufacturers will bear all expenditure of boarding and lodging of 04 x members of PSI / training teams.
- vi. FOB and C&F Prices of the machine should be indicated separately.

(4) Undertaking

Should our offer be accepted, we hereby undertake to supply the stores/render the Services contracted on the basis of Conditions of contract embodied in Form POF 1280 and to deposit the performance bond within the prescribed time, failing which it will constitute a breach of contract, and POF will have the right to purchase the stores/services elsewhere at our risk and cost.

Place ..... Signature of the Tenderer.....  
 Date ..... Name .....  
 Position .....  
 Address .....  
 Income Tax G.I.R. No.....

**SPECIFICATION OF CNC BAR FEED TURNING LATHE,**  
**Dia 42MM CAPACITY**

**MAIN FEATURES**

**Working Area**

Turning Diameter (with chuck)	150 ~ 200 mm
Swing Diameter	350 ~ 450 mm
Turning length (minimum)	700~850 mm

**Spindle**

Integrated motor Spindle RPM	0 up to 6000 negotiable
Positioning Accuracy	At least accurate up to 0.01°
Drive Power (AC servo motor)	20~30 KW

**Turret**

No. of Turrets	01
No. of stations on Turret	12
Nominal Shank size of Holders	VDI 40
No. of Driven Tools on Turret	min 4 Nos
Driven Tools RPM	Variable i.e. 0 upto 4000

**Tail Stock**

Travel	100~130 mm
Force	Variable i.e. 2-12 KN

**Machine Color**

Color should be standard RAL 6011

**Control System**

Fanuc Oi model F or latest / Siemens 840D SL with Shop Turn 3G

Compatible with Windows preferably latest version and online trouble shooting facility. Graphic Simulation system

## Electric Supply System

Electric supply system must conform with following requirements

400  $\pm$  5% VAC, 50 Hz, 3 Phase, 4-Wire System

220  $\pm$  5% VAC, 50 Hz, Single Phase

The equipment should be earthed

All motors should be IP 54 protected

Industrial electrical measuring instruments should have an accuracy of Class 0.5 or better

Equipments should have stabilized power input, line protection circuit breakers with phase failure module & thermally delayed overload relays/electro-magnetic quick-acting relays, as required. It should be followed by cut-out and safety fuses to provide optimum selectivity

## Specification For Electrical Equipment

### Specification

The acceptable specifications will be those being governed by IEC recommendations

### Insulation.

The requirement is for Class F insulation

Note: Equivalent DIN Specifications are acceptable for electrical equipment

### Technical Requirements

Hydraulic Bar feeder for single bar with tube ranging from 20mm to 42mm.

Length of Bar=3mtrs.

Automatic Lubrication System

High Pressure Coolant Supply in Turret

Compressed Air Drier

Sheet Metal Enclosure

Automated operated sliding doors (electrically locked)

Hydraulic Chucking

Automatic Chip Conveyor

Coolant attachment with pump

Voltage stabilizer built-in.

Machine bed of steel fiber reinforced concrete with linear roller bearing guide ways

Cooling attachments/ arrangements for hydraulic units, pumps, control cabinet

Machine Light

Automatic finished work piece collector

Foot pedal for chuck

Technical offer must include detailed tests for Geometrical accuracy of machines according to international standards

## SPARE PARTS

Electrical and mechanical spare parts for 5000 operating hrs.

Availability of Electronic Spare for control for 10 years.

## LITERARY SUPPORT

04 x sets of following documents in **English language** are required:

Schematic diagram of each PCB.

Spindle control unit with diagram.

Electric sequence control circuit of machine.

Details of motors and their control.

Operating, maintenance and service manual.

Working drawing of cutting tool and equipment.

Software package and program of the part.

## ADDITIONAL EQUIPMENT/ATTACHMENTS (Item wise prices should be quoted)

Collets size Dia 20 to 42mm with increment of 2mm

3 jaws chuck with soft jaws Qty. = 02 off

Drawbar to standard 3-jaw chuck

3 x set of standard tool holders for turning, threading, boring, reaming, tapping, drilling with accessories.

Power driven tool holders for drilling, milling, slotting with accessories.

Digital tool Pre-setter

Tool Kit.

## SITE & OPERATING CONDITIONS

Air Pressure available = 06 bar

Temperature variation between Winter and Summer is from  $-5^{\circ}\text{C}$  to  $50^{\circ}\text{C}$ .

Relative humidity varies from 15%~ 90% RH

## TERMS & CONDITIONS

### Setting of Machine

Machine tooled up and tried out for Sketch no. SK/COM-1378, preferably with carbide inserts

### Cycle Time of Operation

Minimum 100x wind shield in single shift of 8 hours.

Technical offer must include probable cycle time, as the same will be considered as prominent feature for comparison between all the offers.

### Training

Free of cost training for 01 week ((excluding journey period)) for 05 x POF Engineers/Technicians on programming, operating and maintenance at manufacturer's premises on the machine for 300 components as per sketch no. SK/COM-1378. Boarding & lodging, return air tickets, inland transportation & 30% daily allowance (DA) per person per day of training including food expenses will be borne by the supplier.

### Pre-shipment inspection

Pre-shipment inspection of machine at firm's premises will be conducted by PSI Team comprising of 03 POF Engineers for 04 days (excluding journey period). Boarding & lodging, Return Air Tickets, inland transportation & 30% daily allowance (DA) per person per day of training including food expenses will be borne by the supplier. The inspection team besides other will particularly carry out trial run of machine and it will be considered satisfactory subject to production of 150 components as per sketch no. SK/COM-1378 & conformity with Geometrical accuracy standards, claimed in technical offer. Dispatch of materials / gauges to carry out trial run at firm's premises will be the sole responsibility of firm through local rep.



**Installation & Commissioning**

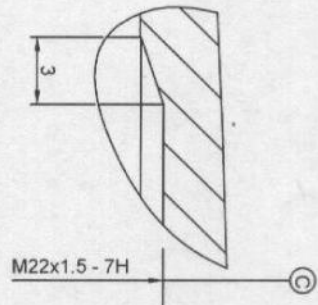
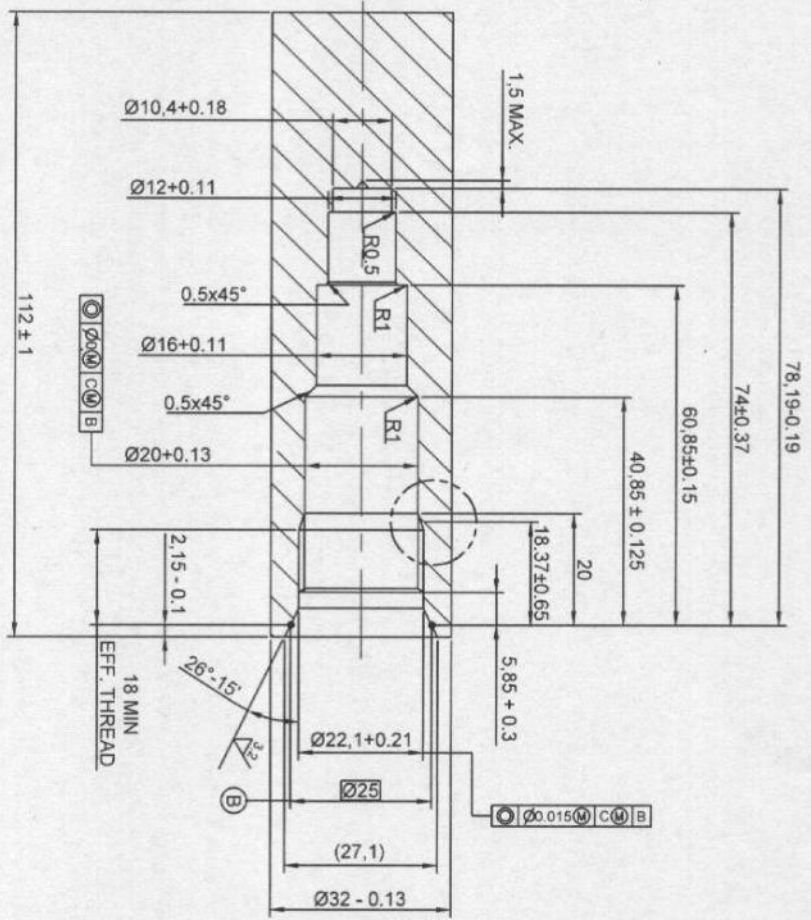
Installation & commissioning of machine at POF Wah Cantt shall be the responsibility of the machine supplier including boarding & lodging. At least 1000 components as per Sketch No. SK/COM-1378 will be produced on continuous run on the machine in purchaser premises.

The supplier will provide the warranty/guarantee certificate, which will be valid for a period of 12 months after successful installation and commissioning of the machine.

Final acceptance based on demonstration of all demanded functions/technical requirements and test run, proving of accuracy and cycle time.

**Country of Origin**

Europe, UK & Japan.



**MATERIAL :-**

AL. ALLOY 2A11, T4  
( GB/T3191 - 1998 )

WIND SHIELD INTERNAL PROFILE. ( OPR. 01 )

DRG. NO. SK/COM-1378